




① FRONT VIEW

TABLE OF CONTENTS

- A101 RENDERINGS
- A102 FLOOR PLAN
- A103 ELEVATION PLAN
- A104 SCHEDULES
- A105 SITE PLAN
- A106 SITE RENDERINGS

| | | | | | | | | | | | |
|---|--|---|----------------|----------------|-------------|------|-----------|----------|-----------|---|------------|
|  www.autodesk.com/revit | DANIEL LOPEZ AFFORDABLE HOUSE | TITLE PAGE | | | | | | | | | |
| | | <table border="1"> <tr> <td>Project number</td> <td>Project Number</td> <td rowspan="3">A100</td> </tr> <tr> <td>Date</td> <td>1/17/2016</td> </tr> <tr> <td>Drawn by</td> <td>KAI VOGEL</td> </tr> </table> | Project number | Project Number | A100 | Date | 1/17/2016 | Drawn by | KAI VOGEL | <table border="1"> <tr> <td>Checked by</td> <td>DANIEL LOPEZ</td> <td>Scale</td> </tr> </table> | Checked by |
| Project number | Project Number | A100 | | | | | | | | | |
| Date | 1/17/2016 | | | | | | | | | | |
| Drawn by | KAI VOGEL | | | | | | | | | | |
| Checked by | DANIEL LOPEZ | Scale | | | | | | | | | |



① INTERIOR VIEW



② BACK PORCH



③ KITCHEN VIEW



④ LANDSCAPE VIEW

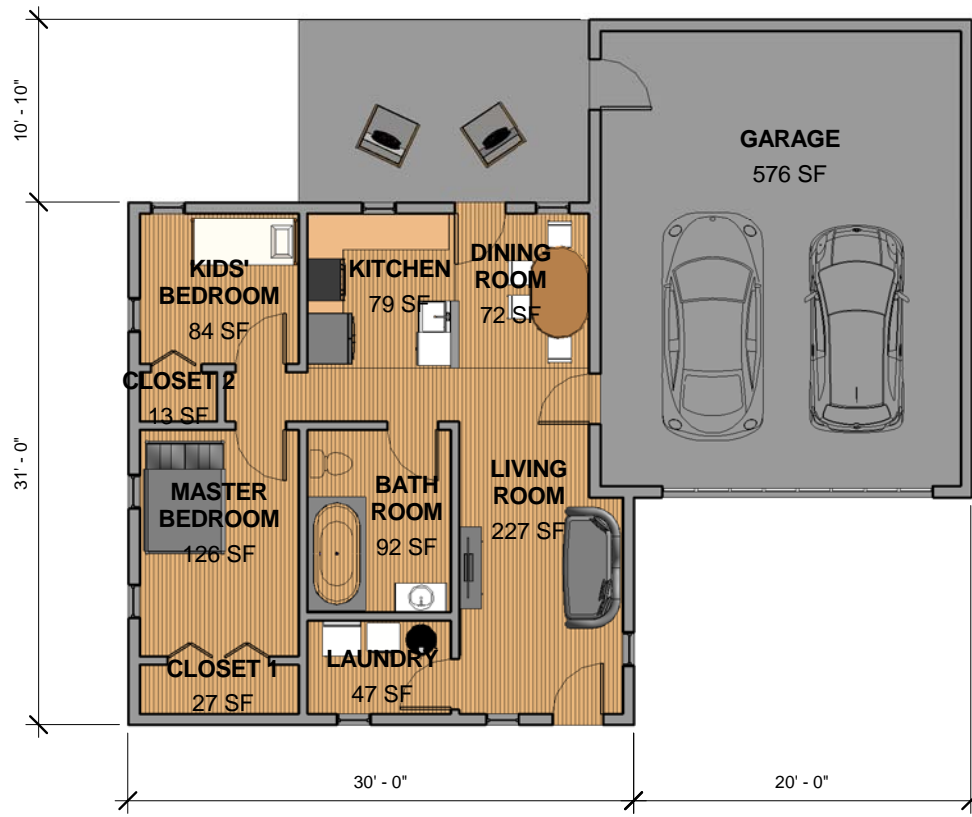


www.autodesk.com/revit


**DANIEL
LOPEZ
AFFORDABLE
HOUSE**

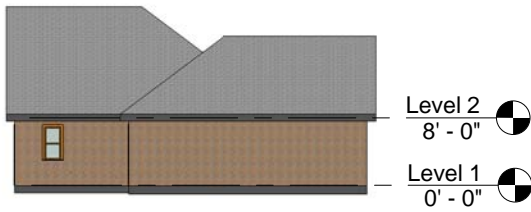
RENDERINGS

| | | |
|----------------|----------------|-------|
| Project number | Project Number | A101 |
| Date | 1/17/2016 | |
| Drawn by | KAI VOGEL | Scale |
| Checked by | DANIEL LOPEZ | |



① Level 1
1/8" = 1'-0"

| | | | |
|---|--------------------------------------|---|--|
|  www.autodesk.com/revit | DANIEL LOPEZ AFFORDABLE HOUSE | FLOOR PLAN | |
| | | Project number Project Number Date 1/17/2016 Drawn by KAI VOGEL Checked by DANIEL LOPEZ | A102 Scale 1/8" = 1'-0" |



① NORTH
1/16" = 1'-0"



④ WEST
1/16" = 1'-0"



② EAST
1/16" = 1'-0"



③ SOUTH
1/16" = 1'-0"



www.autodesk.com/revit

DANIEL
LOPEZ
AFFORDABLE
HOUSE

ELEVATIONS

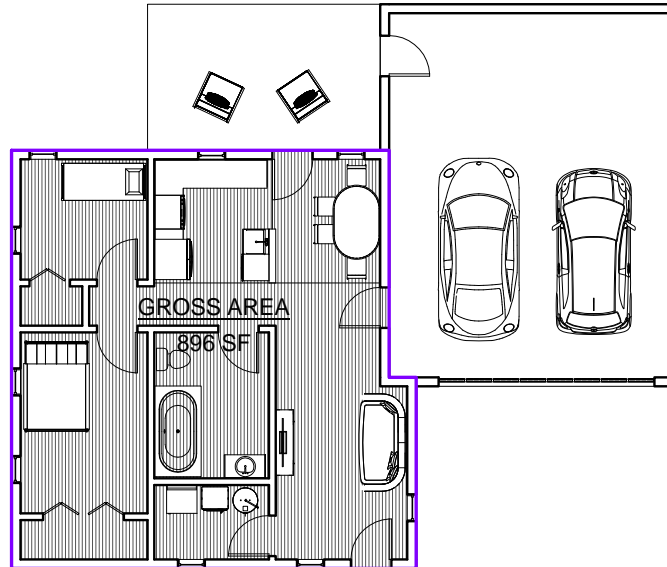
| | | |
|----------------|----------------|---------------------|
| Project number | Project Number | A103 |
| Date | 1/17/2016 | |
| Drawn by | KAI VOGEL | Scale 1/16" = 1'-0" |
| Checked by | DANIEL LOPEZ | |

| Room Schedule | | |
|----------------|--------|----------------|
| Name | Area | Perimeter |
| BATH ROOM | 92 SF | 38' - 7 21/32" |
| CLOSET 1 | 27 SF | 24' - 8" |
| CLOSET 2 | 13 SF | 15' - 0" |
| DINING ROOM | 72 SF | 34' - 4" |
| GARAGE | 576 SF | 96' - 8" |
| KIDS' BEDROOM | 84 SF | 36' - 8" |
| KITCHEN | 79 SF | 35' - 10" |
| LAUNDRY | 47 SF | 28' - 0 11/32" |
| LIVING ROOM | 227 SF | 88' - 2" |
| MASTER BEDROOM | 126 SF | 45' - 8" |

| Door Schedule | |
|---|-------|
| Family and Type | Count |
| 16039_Overhead_Panel_Garage_Door_Colonial_1953: . | 1 |
| Bifold-2 Panel: 36" x 84" | 1 |
| Bifold-4 Panel: 72" x 84" | 1 |
| Single-Decorative 2: 36" x 84" | 1 |
| Single-Flush: 36" x 84" | 1 |
| Single-Panel 4: 36" x 84" | 6 |

| Window Schedule | | |
|----------------------------------|-------|-------------|
| Family and Type | Count | Sill Height |
| Double Hung with Trim: 24" x 48" | 9 | 3' - 0" |

| Planting Schedule | |
|--|-------|
| Family and Type | Count |
| RPC Tree - Deciduous: Schumard Oak - 30' | 7 |

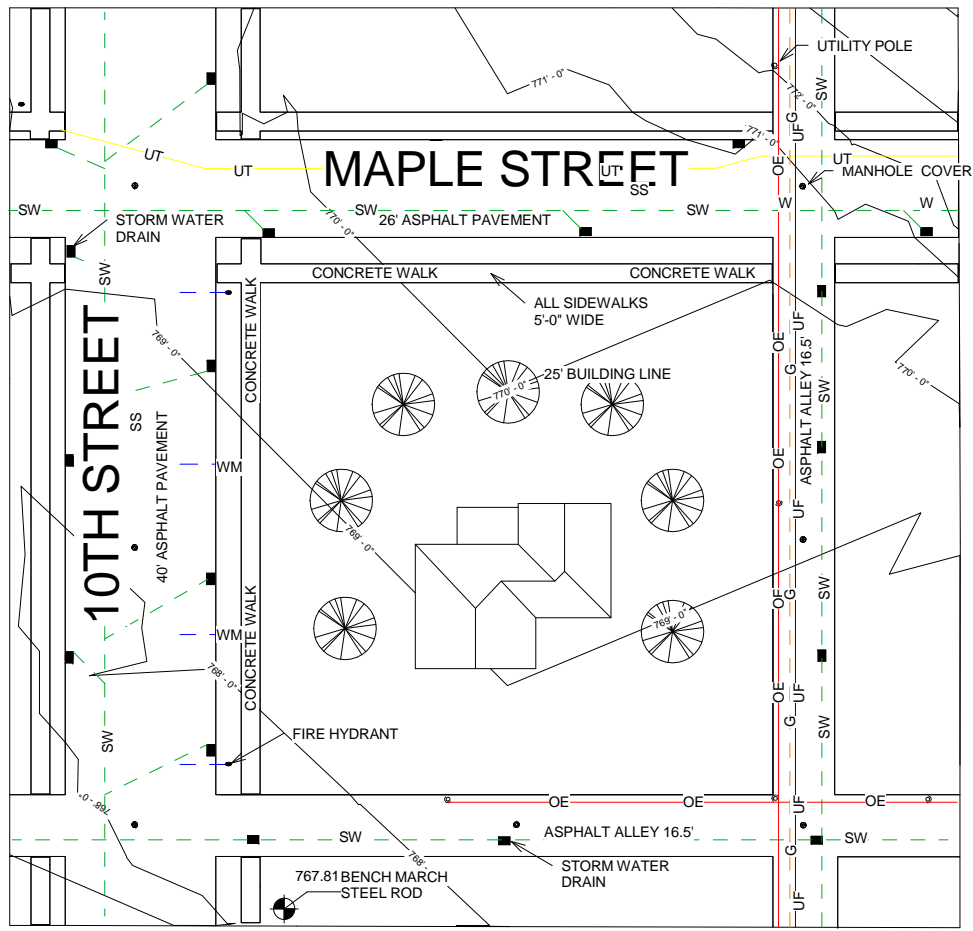


www.autodesk.com/revit

DANIEL LOPEZ
AFFORDABLE
HOUSE

SCHEDULES

| | | |
|----------------|----------------|-------------------|
| Project number | Project Number | A104 |
| Date | 1/17/2016 | |
| Drawn by | KAI VOGEL | Scale 1" = 10'-0" |
| Checked by | DANIEL LOPEZ | |



ZONING

FRONT SETBACK 25'
 SIDE SETBACK 25'
 REAR SETBACK 10'
 ADJACENT 20'
 MAX HEIGHT (4 STORIES)

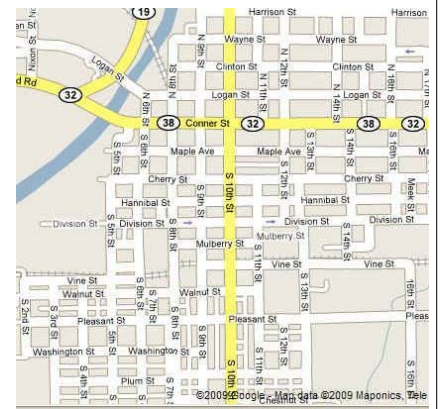
BENCH MARKS

BM 1
 STEEL ROD
 ELEV. 767.81

LEGEND

- - - - - SW - - - - - STORM WATER SEWER LINE
- - - - - G - - - - - UNDERGROUND GAS LINE
- - - - - W - - - - - UNDERGROUND WATER LINE
- — — — — UT — — — — — UNDERGROUND TELEPHONE LINES
- — — — — UF — — — — — UNDERGROUND FIBER OPTIC LINES
- - - - - SS - - - - - SANITARY SEWER LINES
- — — — — OE — — — — — OVERHEAD ELECTRIC LINES
- FIRE HYDRANT
- UTILITY POLE
- MANHOLE COVER
- STORM DRAIN
- WM WATER METER

MAP



① HABITAT FOR HUMANITY SITE
 1" = 30'-0"

Autodesk® Revit®

www.autodesk.com/revit

DANIEL LOPEZ
 AFFORDABLE HOUSE

| No. | Description | Date |
|-----|-------------|------|
| | | |
| | | |
| | | |
| | | |

SITE PLAN

| | | |
|----------------|----------------|-------------------|
| Project number | Project Number | A105 |
| Date | 1/25/2017 | |
| Drawn by | KAI VOGEL | Scale 1" = 30'-0" |
| Checked by | DANIEL LOPEZ | |



① FRONT VIEW



② BACK VIEW



③ BACKPORCH VIEW



www.autodesk.com/revit

DANIEL
LOPEZ
AFFORDABLE
HOUSE

SITE RENDERINGS

| | | |
|----------------|----------------|-------|
| Project number | Project Number | A106 |
| Date | 1/25/2017 | |
| Drawn by | KAI VOGEL | Scale |
| Checked by | DANIEL LOPEZ | |